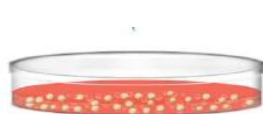


Cell Surface Marker indirect staining



5-10x10⁵ cells per test

Detach cells from culture dish or flask

Wash cells with PBS⁻ (400g for 5 min) at 4°C, discard the supernatant

Add 100 µl secondary host serum 10% (in lack of host serum, use BSA 5%)

15 min at 37°C or 20 min at RT or 30 min at 4°C

Wash cells with PBS⁻ (400g for 5 min) at 4°C, discard the supernatant,
resuspend cell pellet with 100 µL



Add primary Antibody (datasheet's recommendation),
mix, and incubate 30-45 min at 4°C

Wash cells with PBS⁻ (400g for 5 min)

Add secondary Antibody, mix, and incubate 30 min at RT or 45 min at 4°C

Wash cells with PBS⁻ (400g for 5 min) 2-3 times

Run and analysis on Flow Cytometer .You can store cells at 4°C, protected from light for subsequent
analysis on the cytometer, keep at 4°C up to 24h